



Business Region
Skaraborg

Municipality of Mariestad



THE SWEDISH TRADE & INVEST COUNCIL
REGIONAL PARTNER



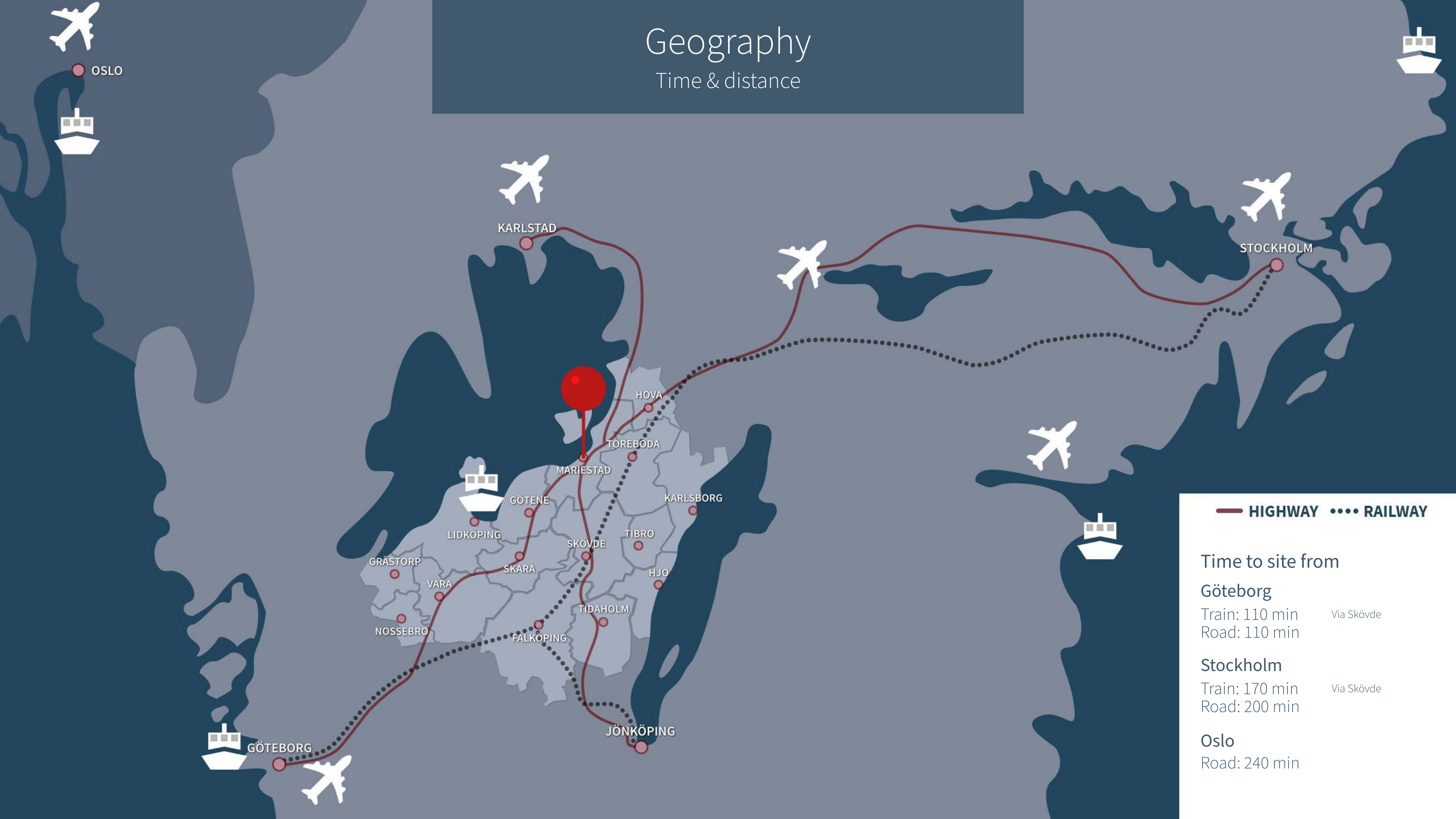
Welcome to Skaraborg

- ✓ Presence of global brands
- ✓ Networking opportunities - we believe in stronger together
- ✓ Superior logistics - in the middle of the Nordics
- ✓ Subcontractor heaven - closeness to your customer
- ✓ Easy access to competence - 135 000 students within 200 km
- ✓ Green power - reduce your emissions and make money while doing it
- ✓ Collaboration with the university of Skövde and partners
- ✓ Close and easy collaboration with all authorities
- ✓ A vast spread of housing options to suit different needs
- ✓ Many options so spend spare time to assure good recreation
- ✓ Connects to the world via easy access to many kinds of transportation



Geography

Time & distance



— HIGHWAY **••• RAILWAY**

Time to site from

Göteborg

Train: 110 min Via Skövde
Road: 110 min

Stockholm

Train: 170 min Via Skövde
Road: 200 min

Oslo

Road: 240 min

Site at Sandbäcken

Quick facts

- ✓ Total are of 135 Ha (334 acres)
- ✓ Possibilities to expand at connection site of 70 Ha (170 acres)
- ✓ The site can be exploited up to total percentage of 100%
- ✓ Building height can be customized to customer needs
- ✓ Instant access to site can be given to customer
- ✓ The site is prepared with connections for broadband fiber, fresh water and sewerage
- ✓ Heating provided with sustainable solutions of direct heating
- ✓ We can offer power distribution of up to 10 MW within 24 months
- ✓ Environmental permits for industry cleared
- ✓ This plot, and neighboring plots are planned and prepared for industry usage
- ✓ Excellent location for distrubution on road via direct access to European Highway E20

Plant area

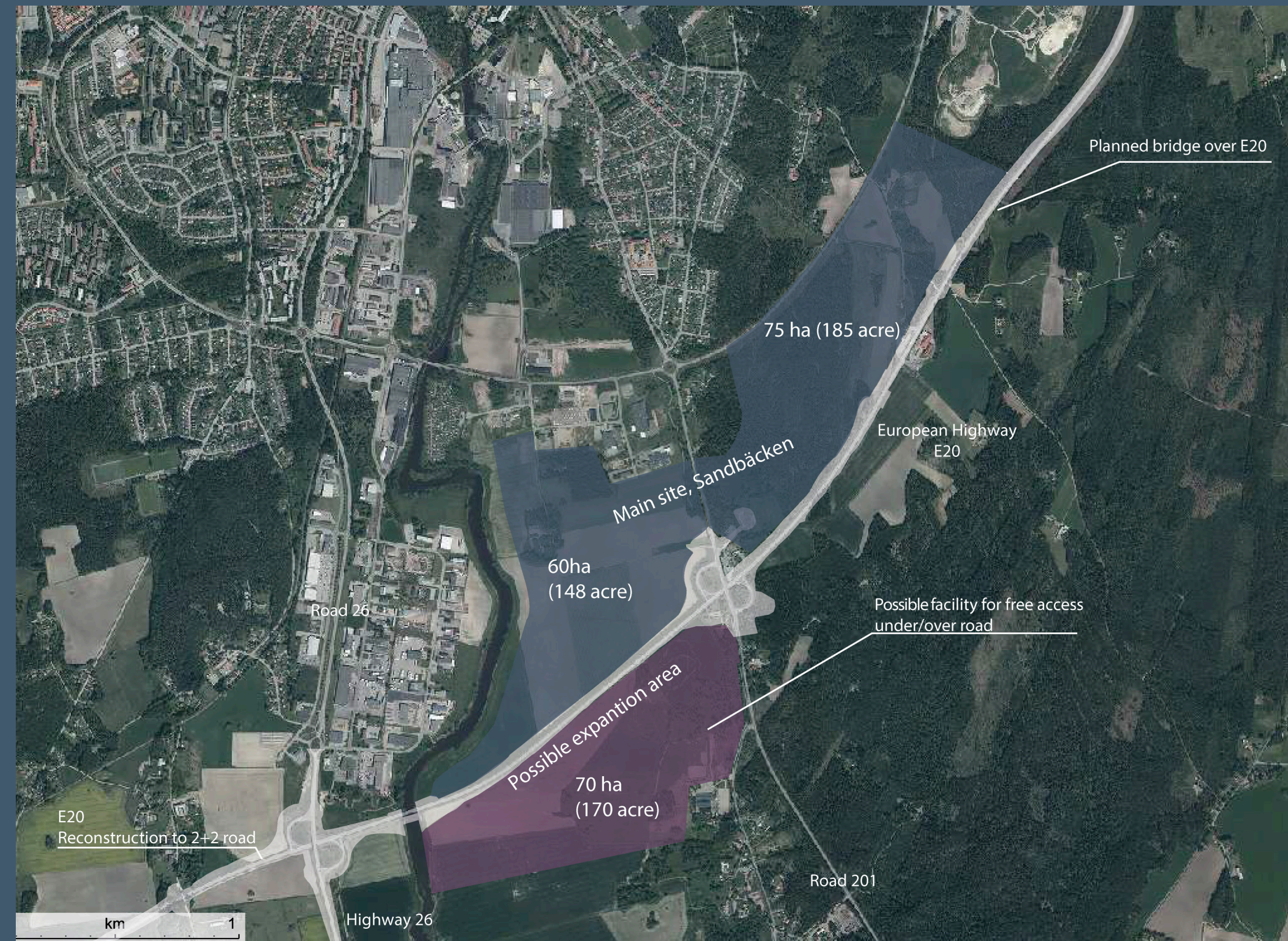
Location

The Sandbäcken site connects to two other plots that are owned by the municipality of Mariestad. The plots can be prepared for full accessibility, used for industry and have the same possibilities for construction and noise pollution as the Sandbäcken site. The site is 135 Ha (334 acres) in total.

In direct access to the Sandbäcken site we can also offer an area for expansion (marked purple on the map). This area has the same classifications as Sandbäcken regarding volumes, sound pollution, etc.







[Google maps - Link to the site](#)

Coordinates: 58.609801, 13.847913



Plant area

Schematics

-  Connection point - electricity
-  Connection point - water/sewage
-  Connection point - road
-  Connection point - railway
-  Property line
-  Railway



Plant area

General information

The offered site at Sandbäcken can be immediately accessed in order to start the construction phase. The local and regional energy suppliers have been contacted to support in setting up a fully customized solution to assure a high-quality power delivery to your specifications.

The geotechnical preconditions in terms of buoyancy are excellent for setting up heavy equipment without major ground preparations.

Here is an overview that shows the Sandbäcken site from the east, with European Highway E20 to the left.

[Drone - Flight to overview site](#)





Peter Yström
+46(0)790 665 313
peter.ystrom@skaraborg.se



Alexandra Norlander Tornberg
+46(0)722 106 381
alexandra.nt@skaraborg.se

The region of Skaraborg has a long heritage of helping each other to global competitiveness.

We want to collaborate with you!

