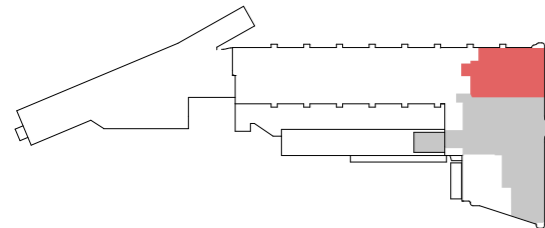


YTA LOKAL 1 TOTALT: ca 2180 kvm

ANTAL SKRIVBORDSPLATSER: 95 st

ANTAL ÖVRIGA ARBETSPLATSER: ca 97 st

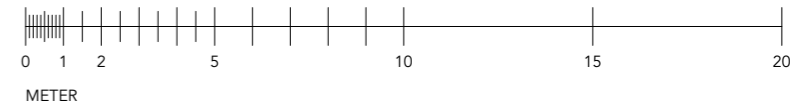
ca 11,5 kvm/person

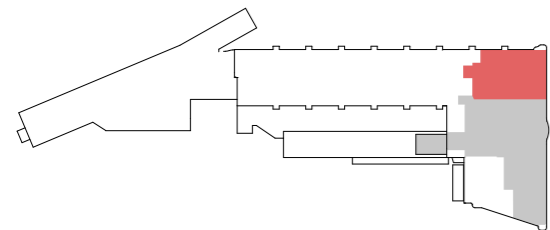
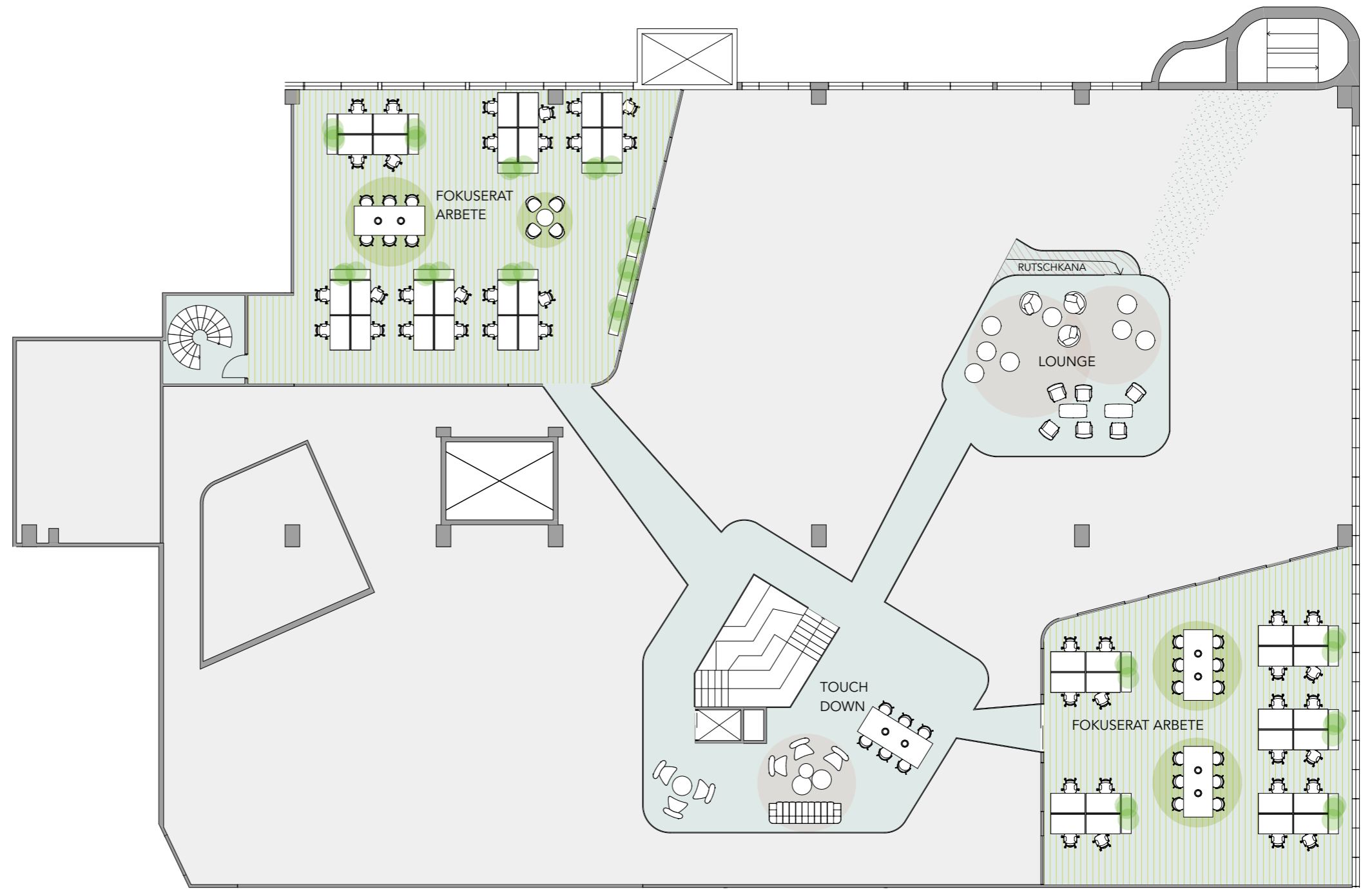


ORIENTERINGSFIGUR

LOKAL 1 - PLAN 6

SKALA 1:200

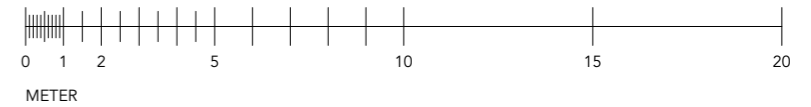


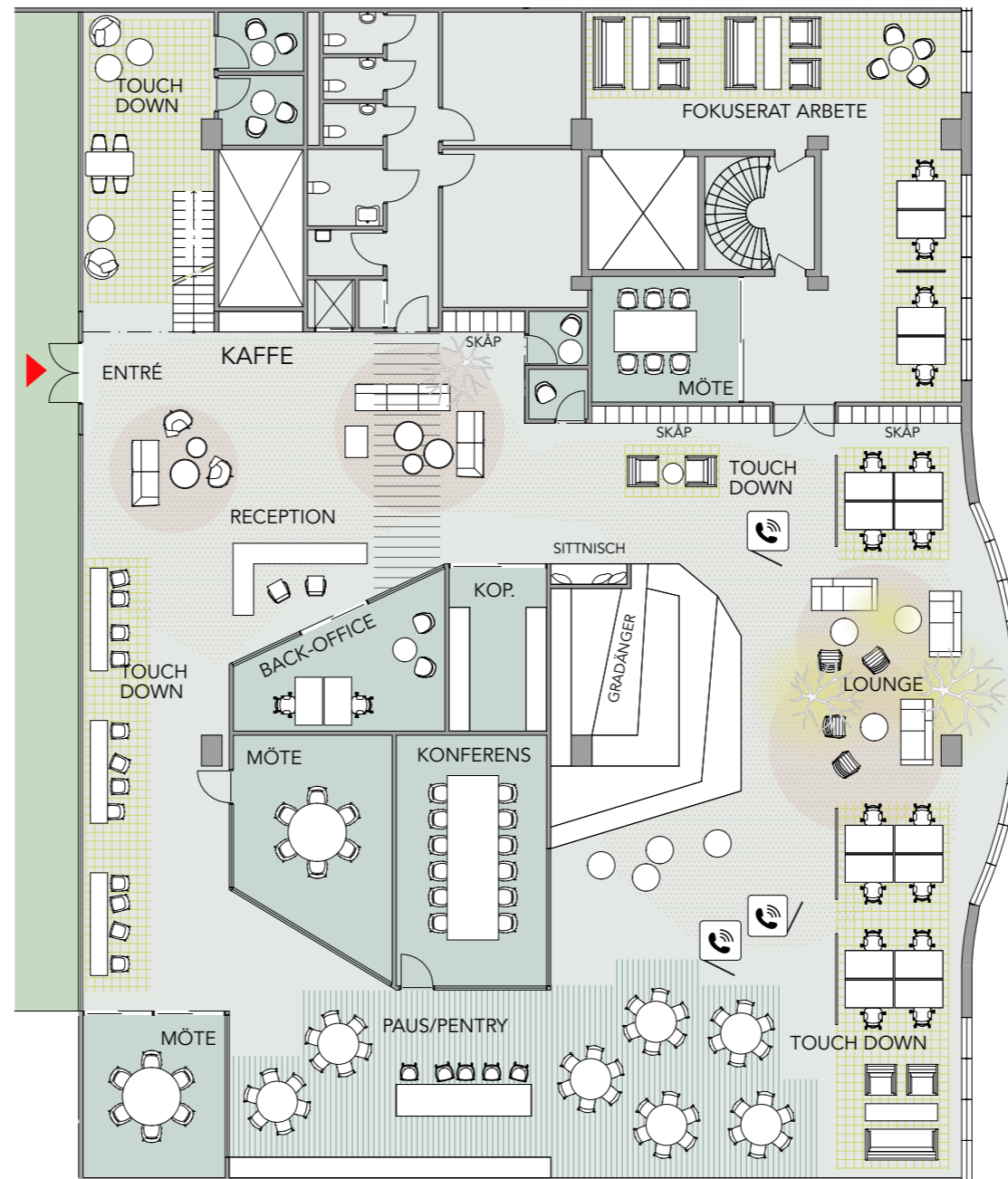


ORIENTERINGSFIGUR

LOKAL 1 - PLAN 7

SKALA 1:200

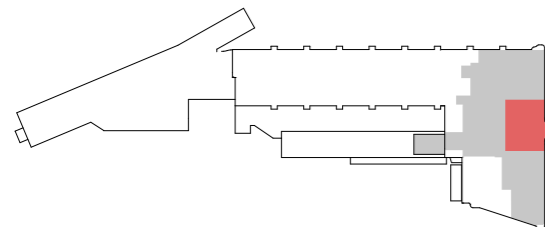




YTA LOKAL 2 TOTALT: ca 1200 kvm

ANTAL SKRIVBORDSPLATSER: 44 st
 ANTAL ÖVRIGA ARBETSPLATSER: ca 70 st

ca 10,5 kvm/person

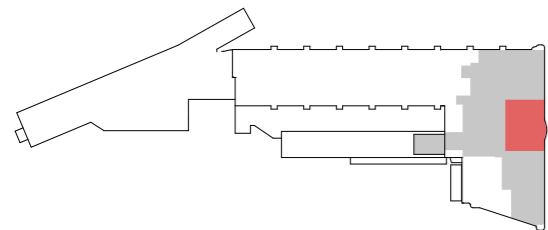
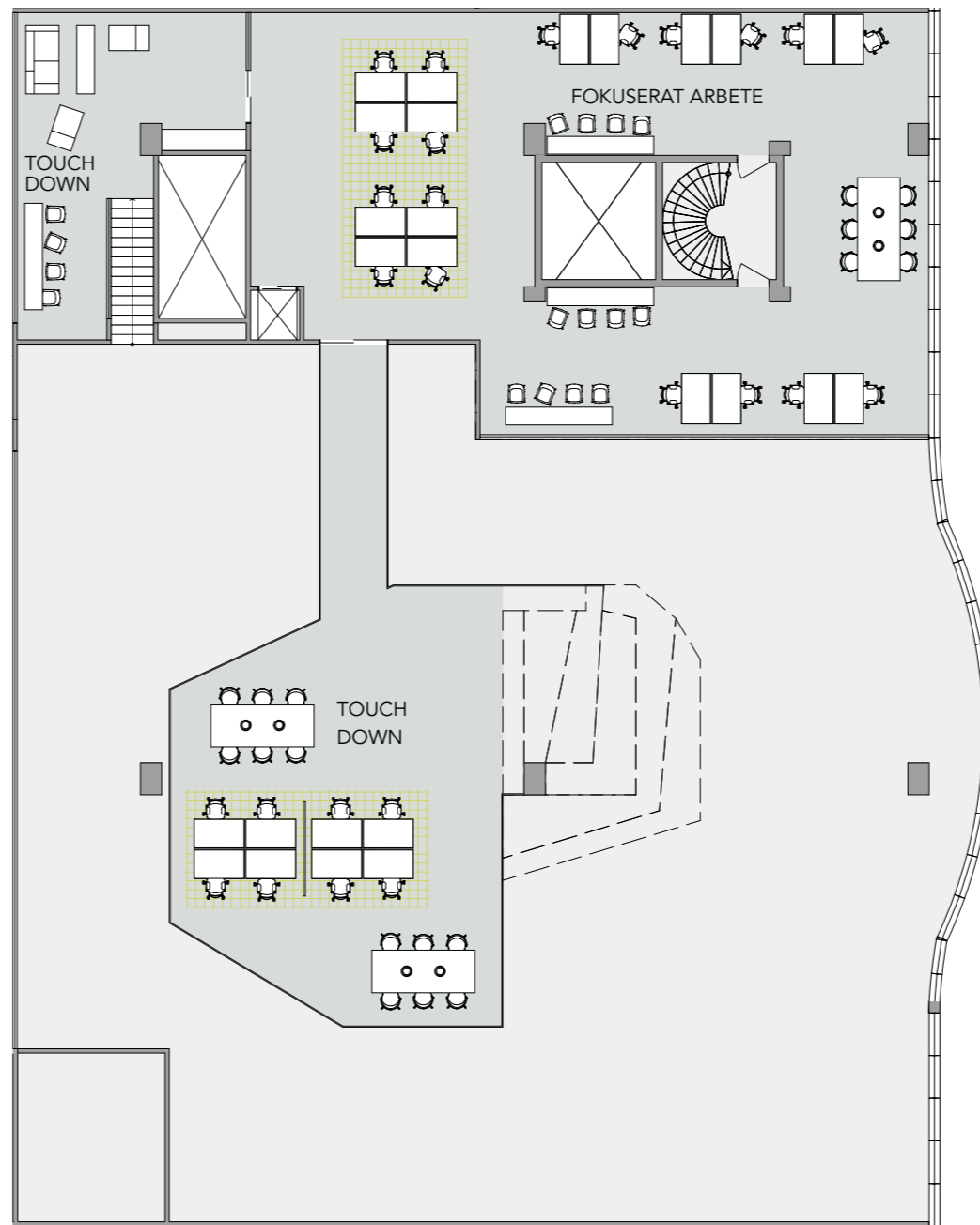


ORIENTERINGSFIGUR

LOKAL 2 - PLAN 6

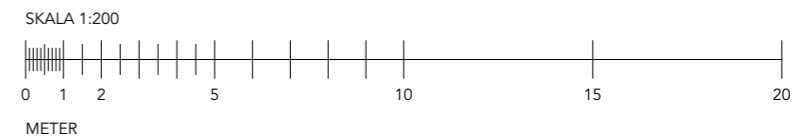
SKALA 1:200





ORIENTERINGSFIGUR

LOKAL 2 - PLAN 7

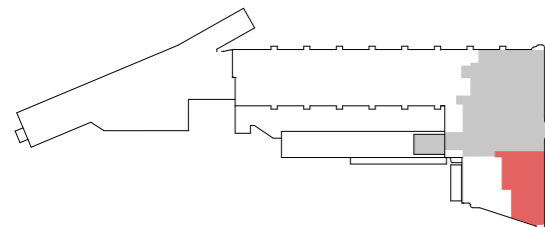




YTA LOKAL 3 TOTALT: ca 1380 kvm

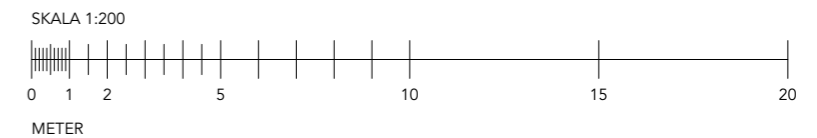
ANTAL SKRIVBORDSPLATSER: 42 st
 ANTAL ÖVRIGA ARBETSPLATSER: ca 60 st

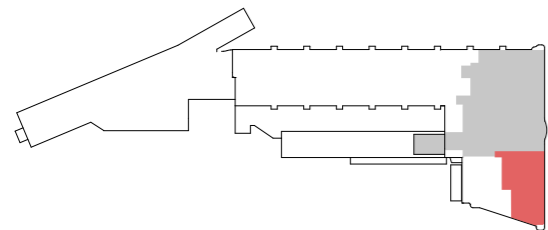
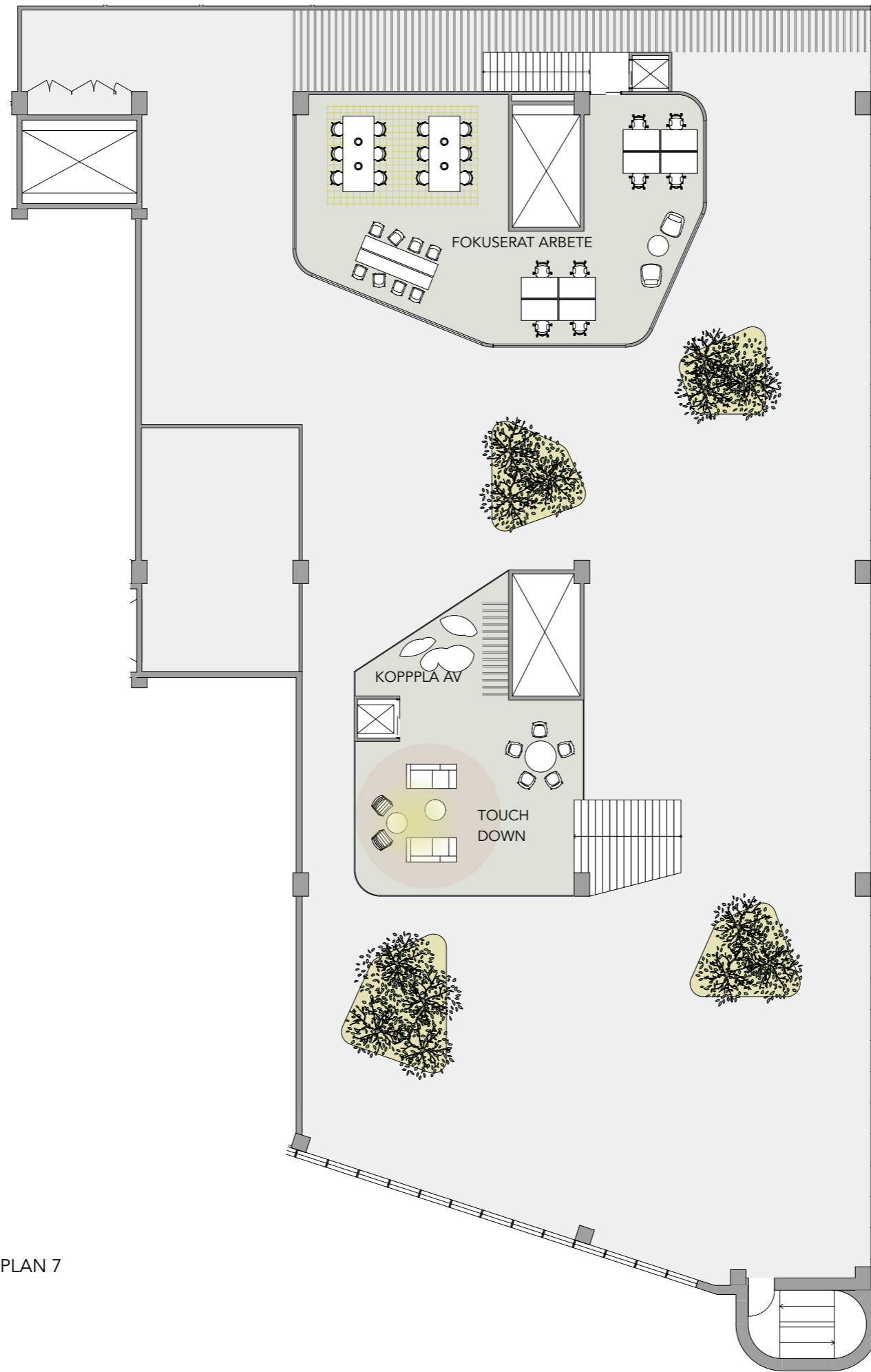
ca 13,5 kvm/person



ORIENTERINGSFIGUR

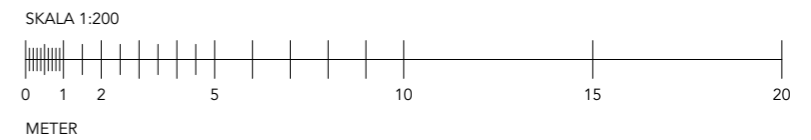
LOKAL 3 - PLAN 6

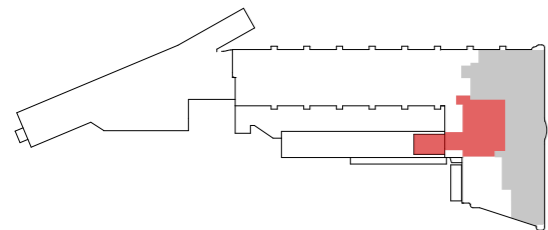




ORIENTERINGSFIGUR

LOKAL 3 - PLAN 7





ORIENTERINGSFIGUR

PLAN 6 - ENTRÉ - HUSGEMENSAMMA YTOR

SKALA 1:200

