

PLAN 4 & 5

670 kvm (330 kvm + 340 kvm)

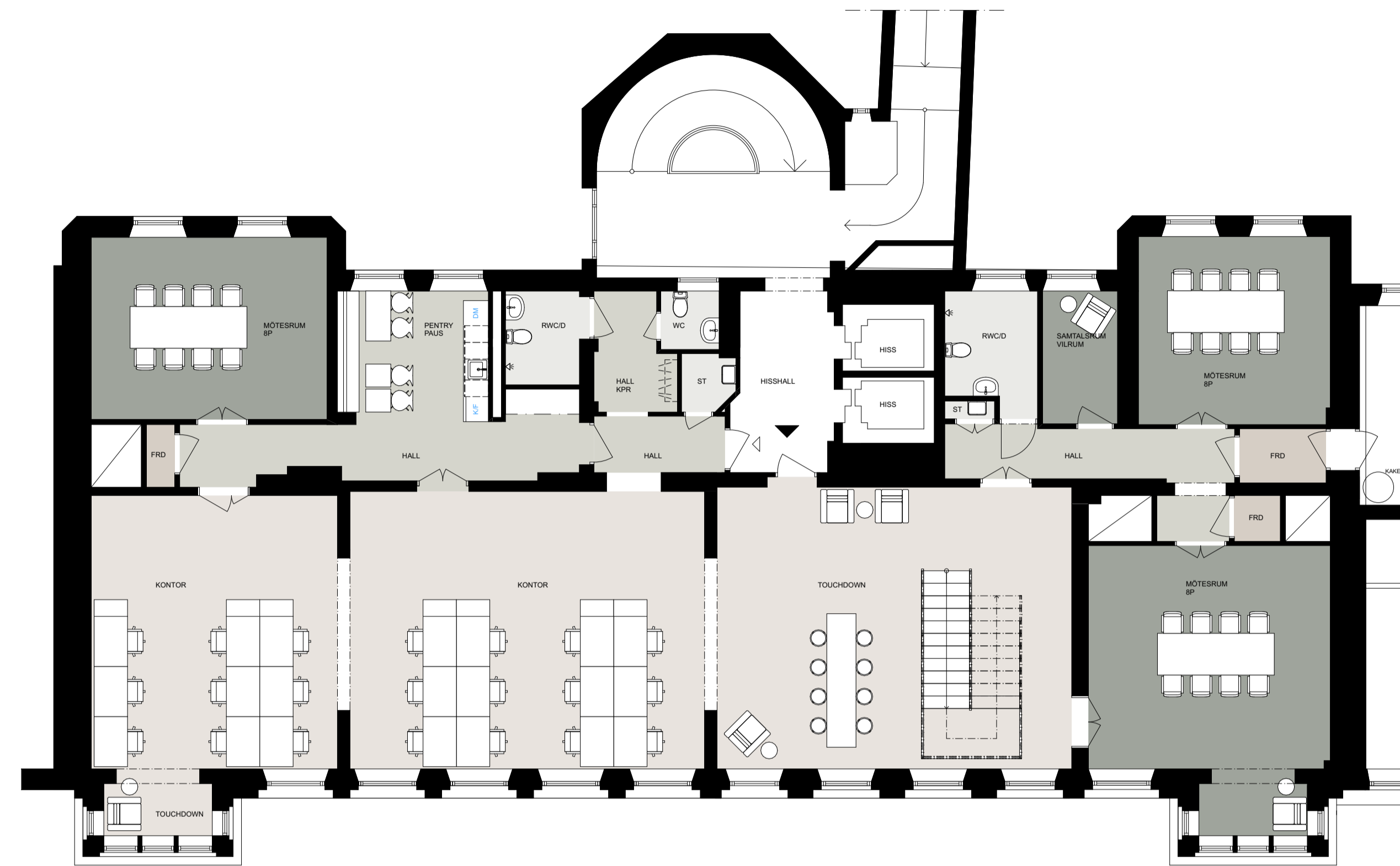
Arbetsplatser 51 st
Ca 13 kvm/person

Plan 4
Arbetsplatser 29 st
Mötesrum 3 st
Samtalsrum/vilrum 1 st
Pentry 1 st
HWC med dusch 2 st
WC 1 st
Städ 2 st

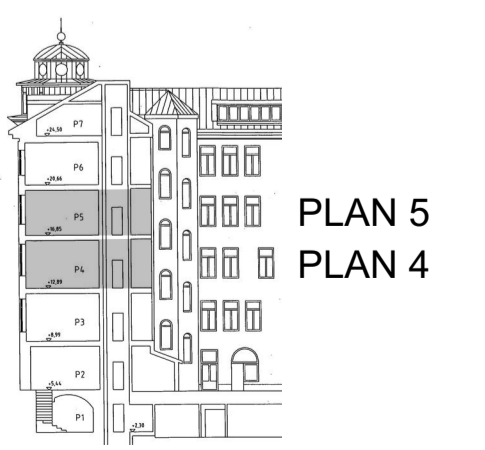
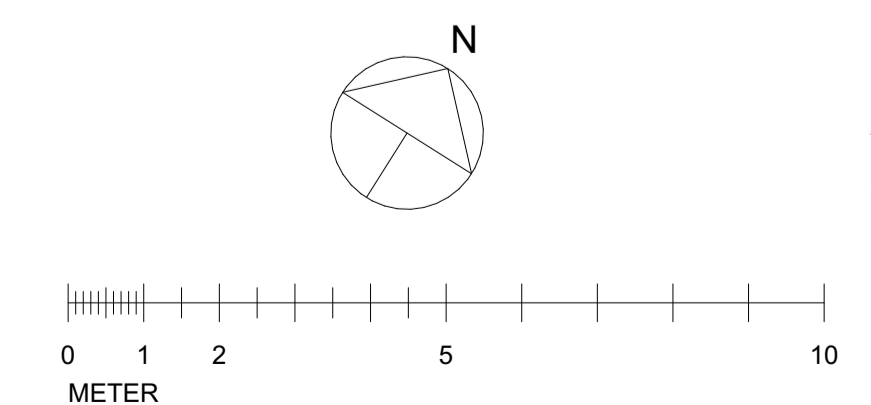
Plan 5
Arbetsplatser 23 st
Mötesrum 3 st
Pentry 1 st
HWC med dusch 2 st
WC 1 st
Städ 2 st

(Storlek bord 1400x800)

Datum 2022.10.21

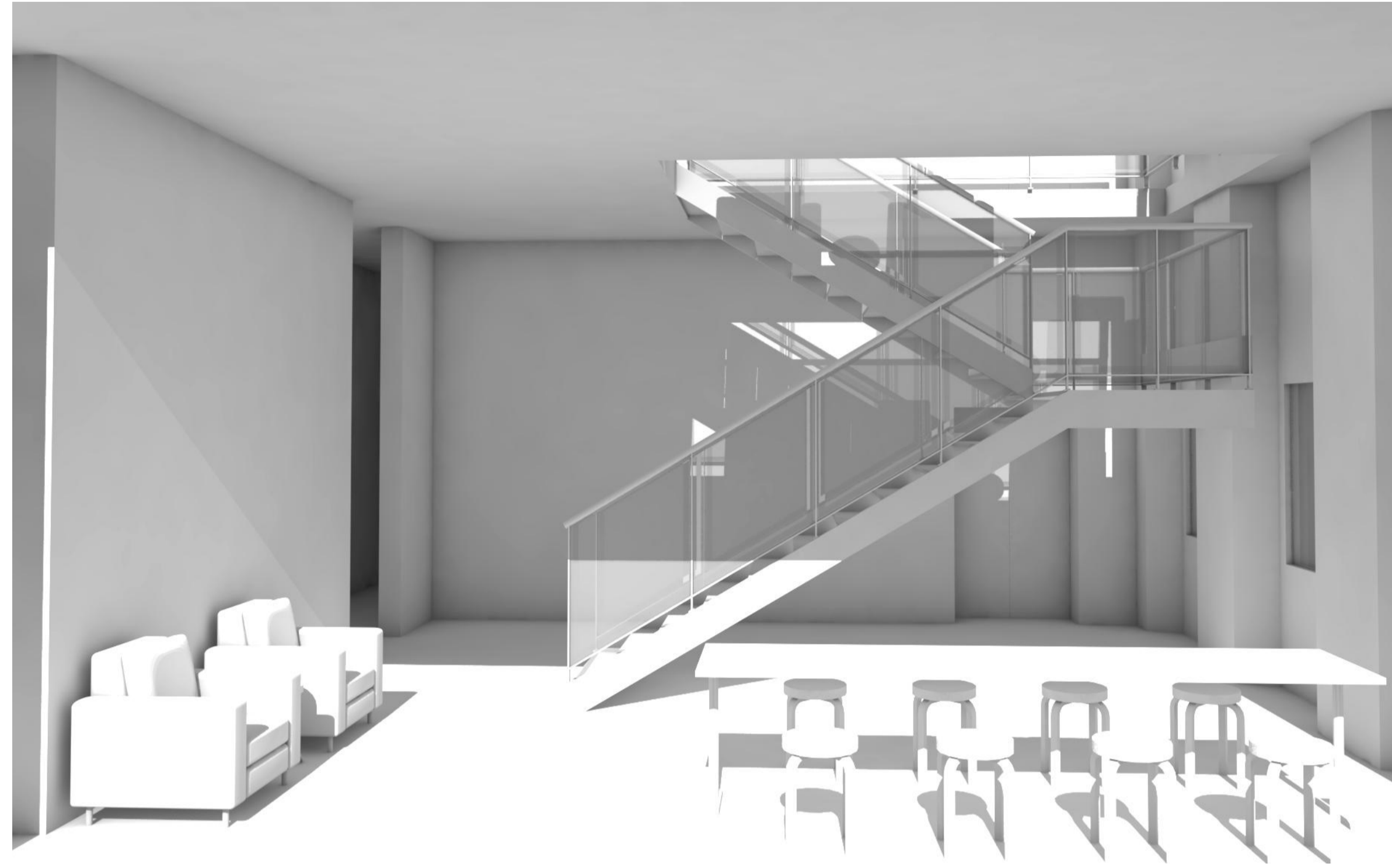


- KONTORSYTA
- KONTOR / MÖTEN / SAMTAL
- PAUS / PENTRY / LOUNGE / PRINT
- WC / RWC

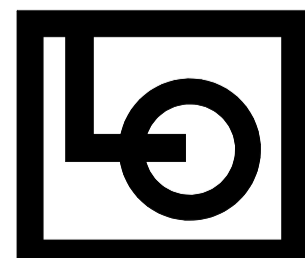


PLAN 4 & 5

Datum 2022.10.21

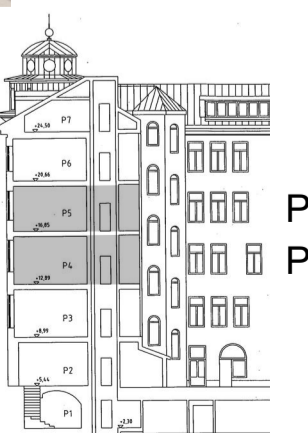


Enkel illustration



S-XI

Architects



PLAN 5
PLAN 4